



MSHA Updates
MSHA SE District Office



Fall Protection & Demo
Jerry Lawton, Web Devices



Confine Space
Tim Kressly, G&R

SE Mine Safety Pre-Conference - Agenda

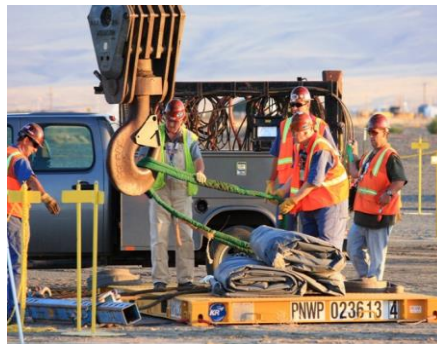
Tuesday - 10/30/2018 8:00am - 3:30pm

Contractors & Maintenance

- 8:00am-8:10am Welcome, Introductions, Review Agenda; Danny Callies G&R
- 8:10am-8:20am CEU's for Attendees; Allyn Holladay, Deep South Center-UAB
- 8:20am-9:30am MSHA Updates & Review Fatal/Near Misses, MSHA SE Office
- 9:30am-9:45am Break; Q&A, Networking
- 9:45am-11:00am Fall Protection plus demo; Jerry Lawton, Wed Devices-USA
- 11:00am-11:45am Confine Space; Tim Kressly, G&R Mineral Services
- 11:45am-12:30pm Lunch; Q&A, Networking
- 12:30pm-1:15 pm Work Hazards/Training for Non-English Speaking Miners; Marisa Nunez, CMN Steel- Miami, FL
- 1:15pm-2:15pm Wellness in the Workplace; Unify Health Services
- 2:15pm-2:30pm Break; Q&A, Networking
- 2:30pm-3:30pm Crane & Rigging Safety; Danny Callies, G&R Mineral Services



Worksite Hazards
Marisa Nunez-CMN



Crane & Rigging Safety
Danny Callies, G&R



Workplace Wellness
Kelly Ingram-Mitchell